



## Organ Programming for Bucher XPlus ICS



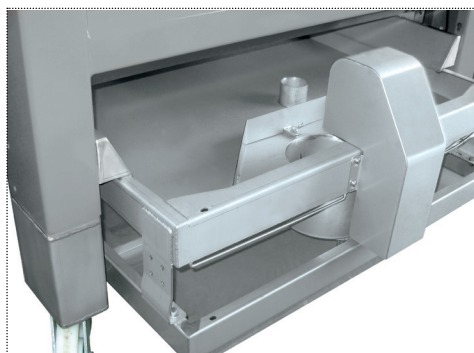
Bucher XPlus 80 ICS

### A «dynamic» trough to run presses

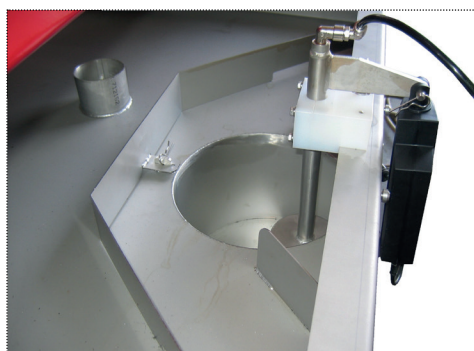
Bucher Organ is a new process for running Bucher XPlus ICS presses.

Bucher Organ uses the “dynamic” trough as the transmitter of the necessary information to the software to run the press.

Bucher Organ leaves the operator free from any constraints related to a complicated programming due to pressure, pressure keeping-up, number of tank rotations...



Dynamic trough for the reception of juices  
Rear view of press



Measurement well

## Operation

- The “dynamic” trough is fitted with a juice drain-off measurement system. The basic principle of operation is based on the intermittent recording of the depth of liquid in a measurement well.
- Leaving the slotted channels, the must is conveyed to the measurement well upstream of the collection juice trough.
- The steady measurement of juice draining allows the good running of pressing and draining cycles.
- Depending on the operator’s quality or production targets, the process analyses the reaction of the crop and adjusts programming on an ongoing basis.
- Operation is automatic.
- Bucher Vaslin has studied and gained experience of grape behaviour over many years. Bucher Organ integrates all the physical and oenological parameters of that behaviour.

## Operator targets

The operator defines his needs:

- type of grapes to be pressed,
- the level of desired draining on a scale of 1 to 9,
- maximum duration of pressing,
- The type of grape is an indication of crop behaviour.  
The operator can select one of the following 10 possible criteria, as for example:
  - gentle pressing (e.g.: Pinot gris, Riesling, Pinot noir...),
  - normal pressing (e.g.: for red grapes from the tank),
  - dynamic pressing (e.g.: Chardonnay, Ugni Blanc...),
  - pressing for late harvest (e.g.: for liquor-like white).
- The level of drain-off corresponds to the desired degree of extraction. The higher the degree the drier the pressed pomace.
- The maximum duration of pressing is the time assigned for pressing.

## Applications

- Once the targets are set, Bucher Organ operates automatically. It detects the presence of free juice, triggers the draining phase, determines the pressing phases (pressure build-up, pressure hold, decompression) and orders a stop to pressing.
- Bucher Organ is suitable for any variety of vine.

Distributed by:

### **Bucher Vaslin**

Rue Gaston Bernier – BP 70028  
F - 49290 Chalonnes sur Loire  
Tél. +33 (0)2 41 74 50 50  
Fax +33 (0)2 41 74 50 51  
E-mail : [commercial@buchervaslin.com](mailto:commercial@buchervaslin.com)

**[www.buchervaslin.com](http://www.buchervaslin.com)**  
**Your success is our priority**